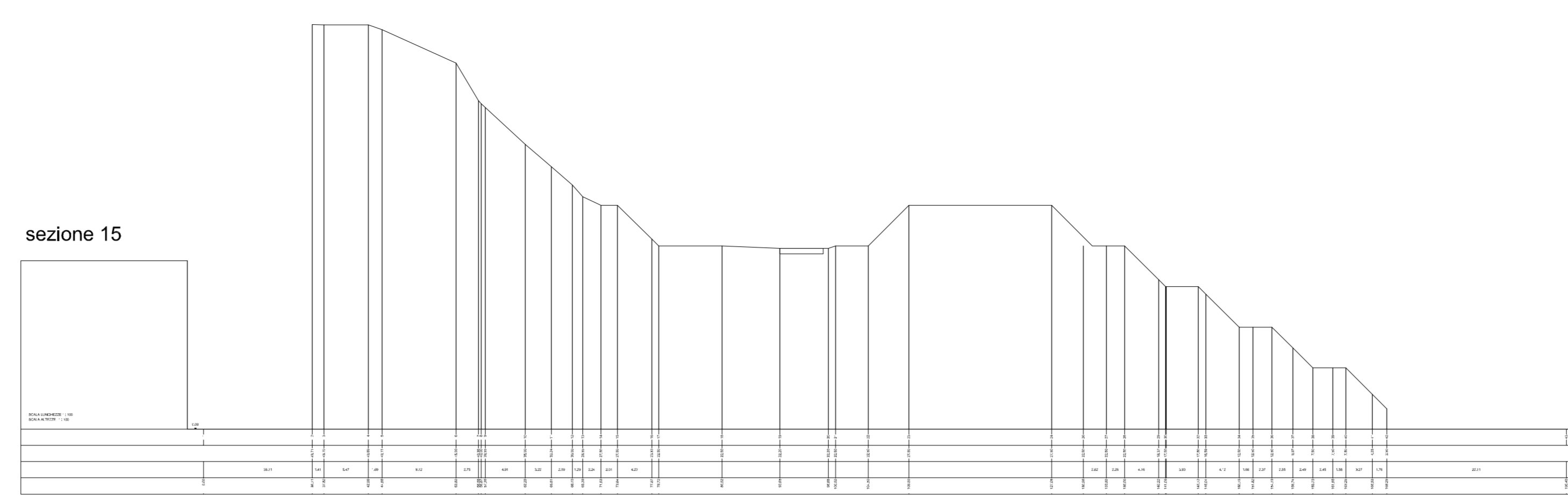
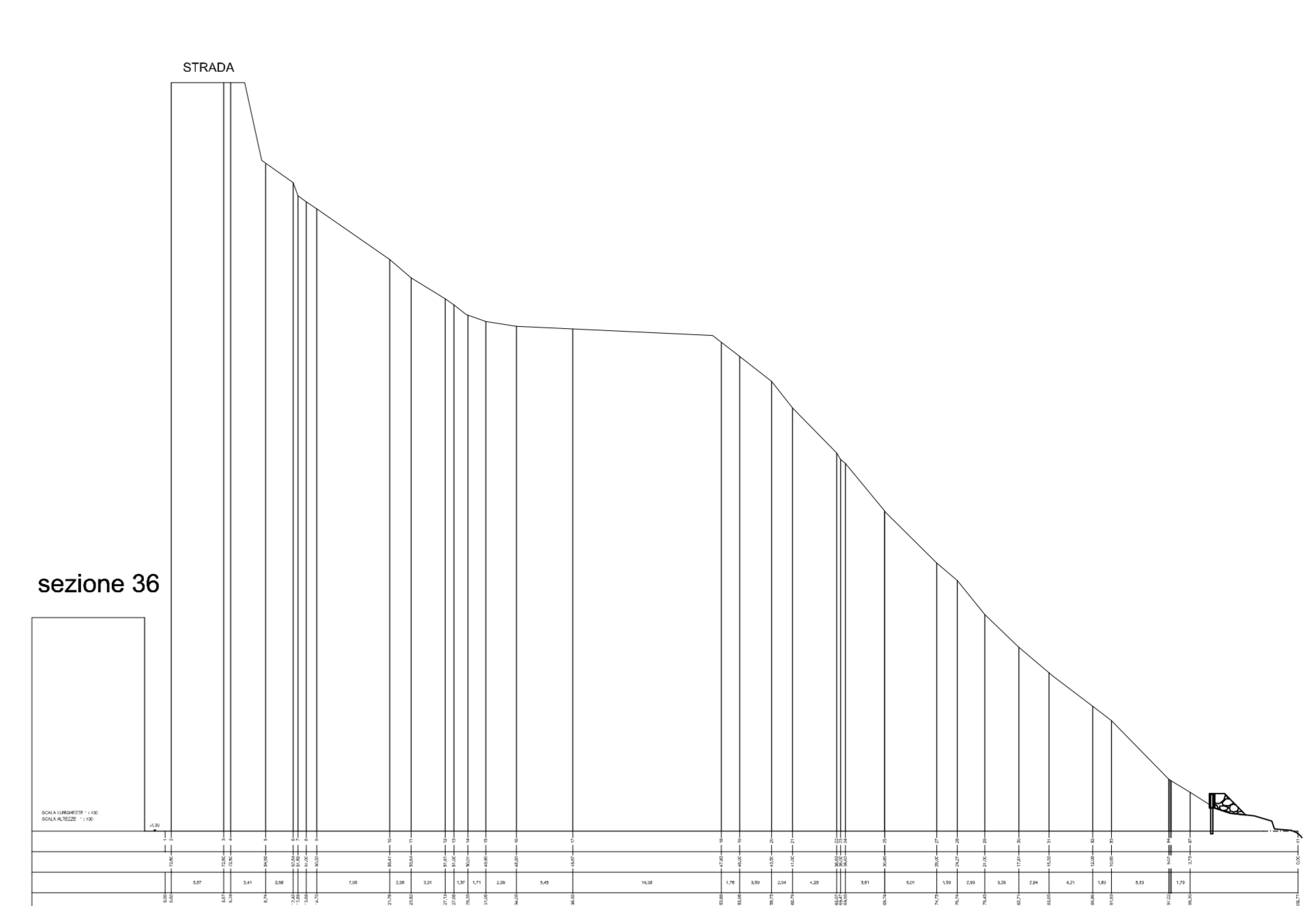


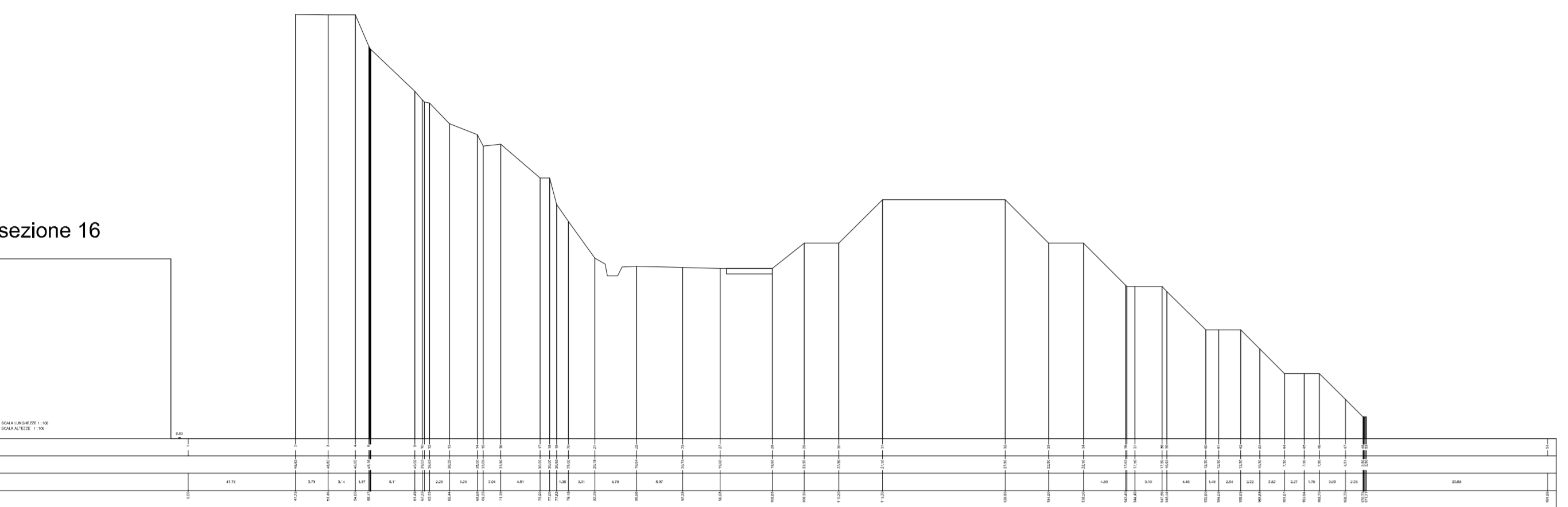
sezione 14



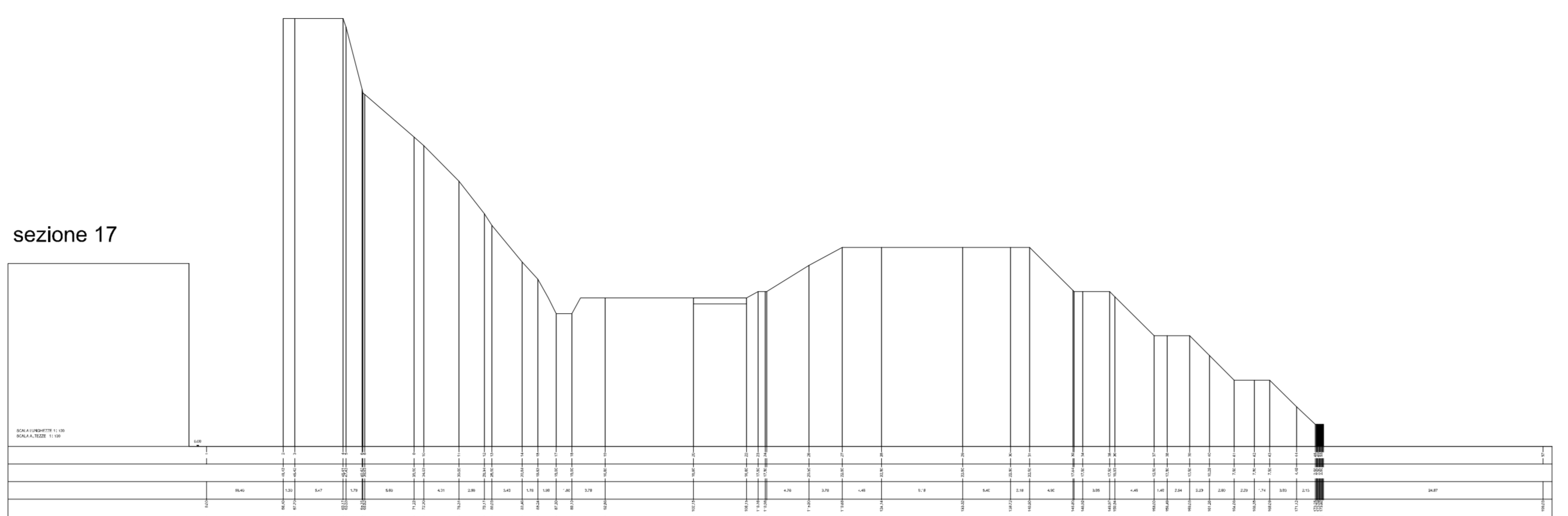
sezione 15



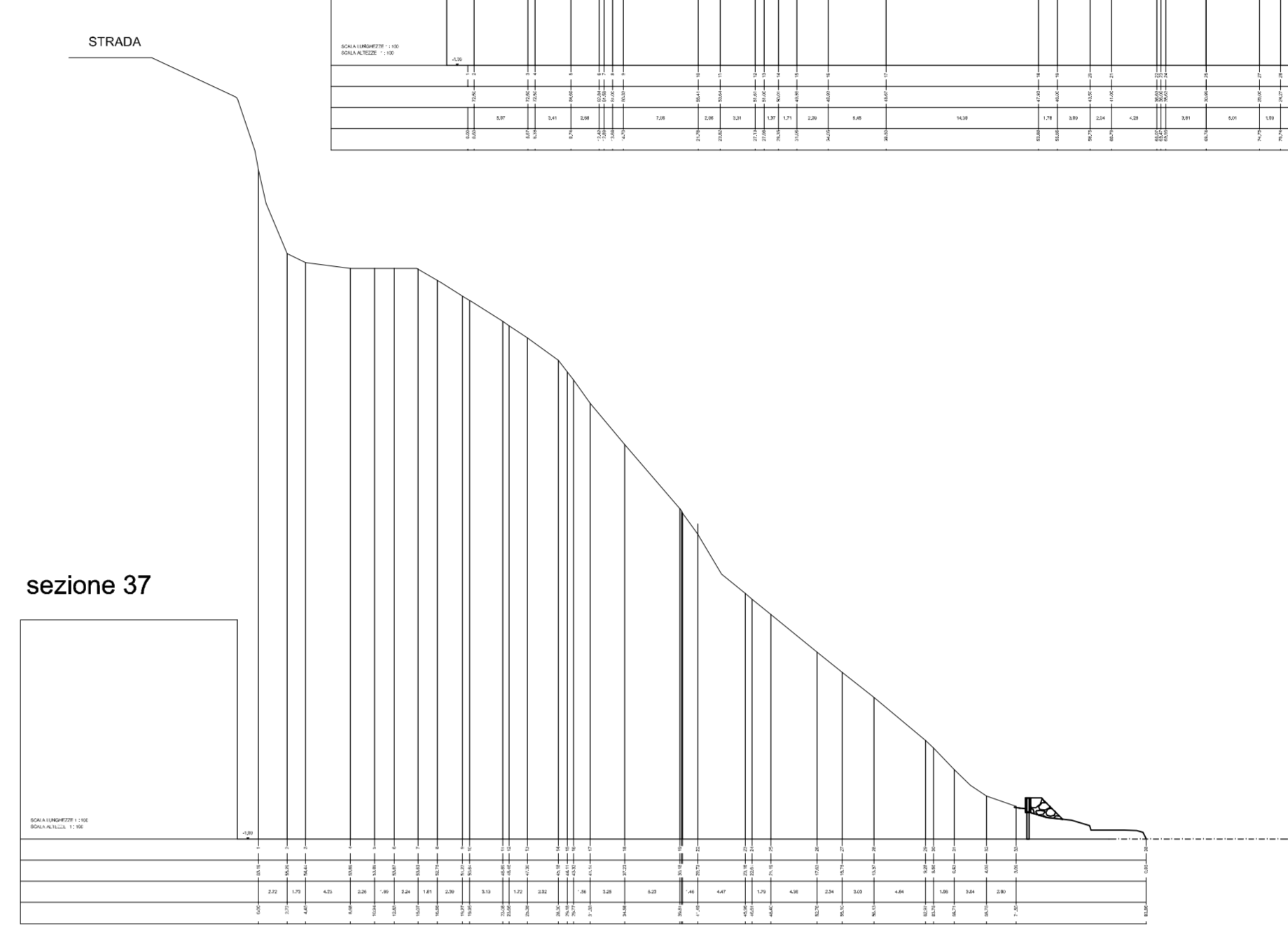
sezione 36



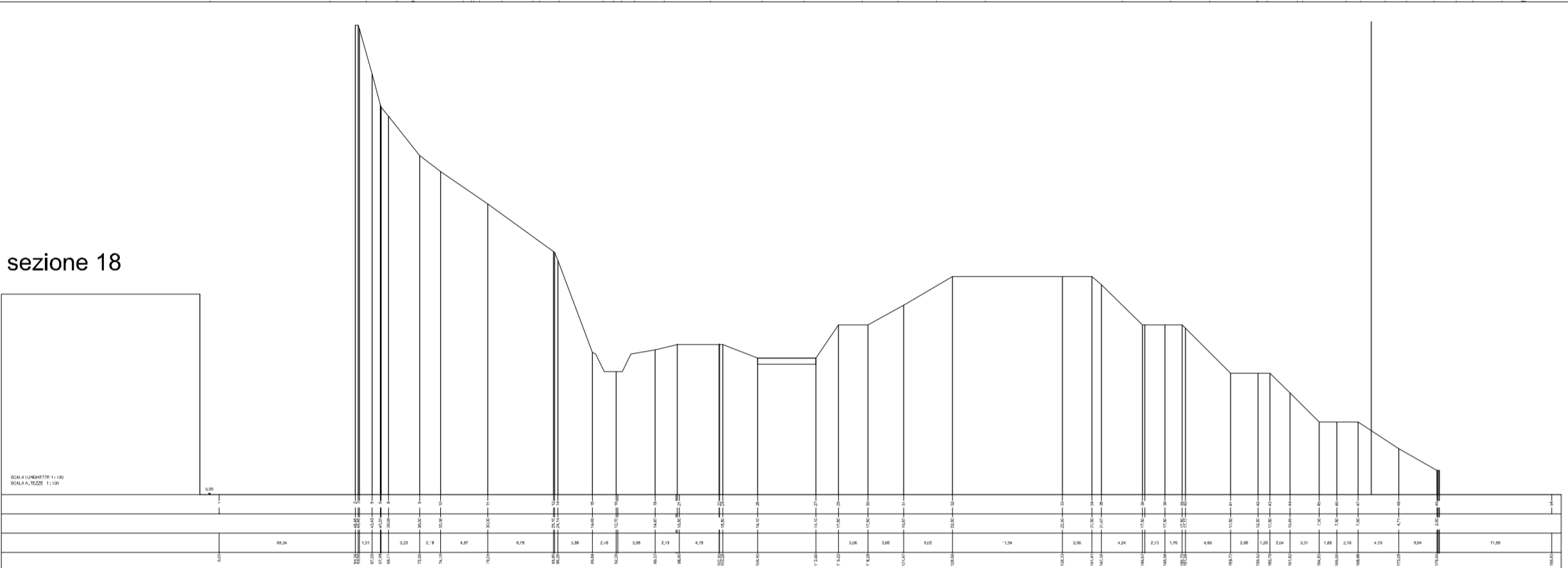
sezione 16



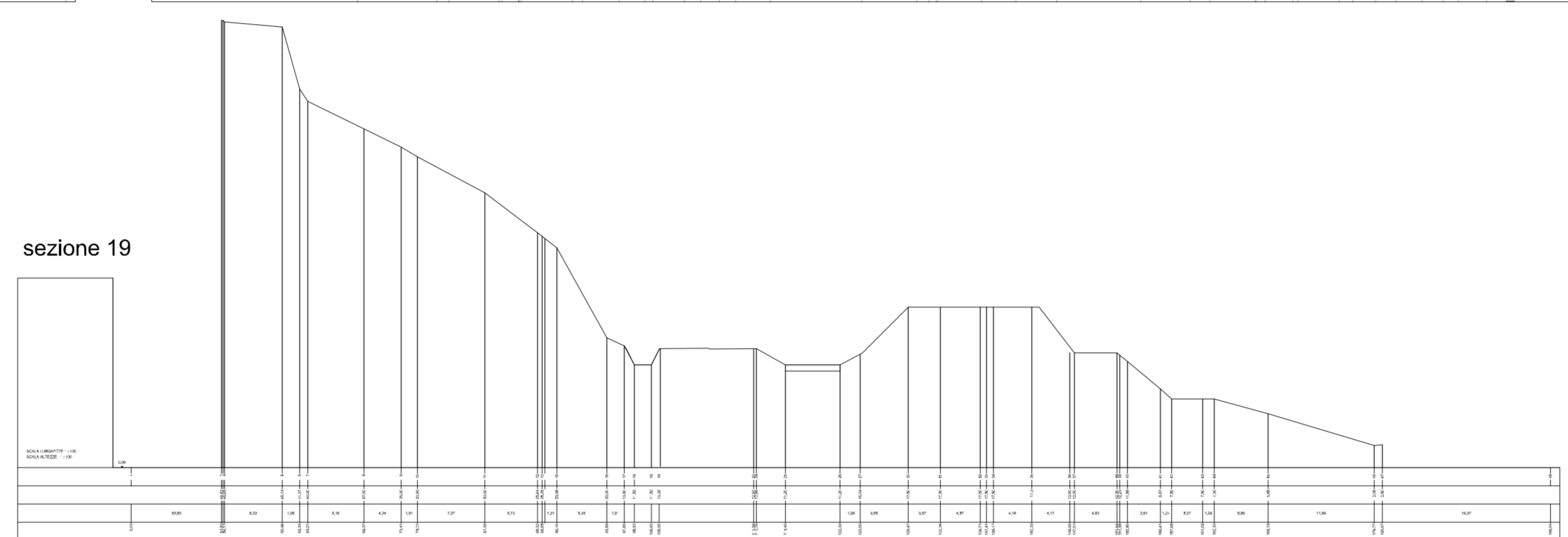
sezione 17



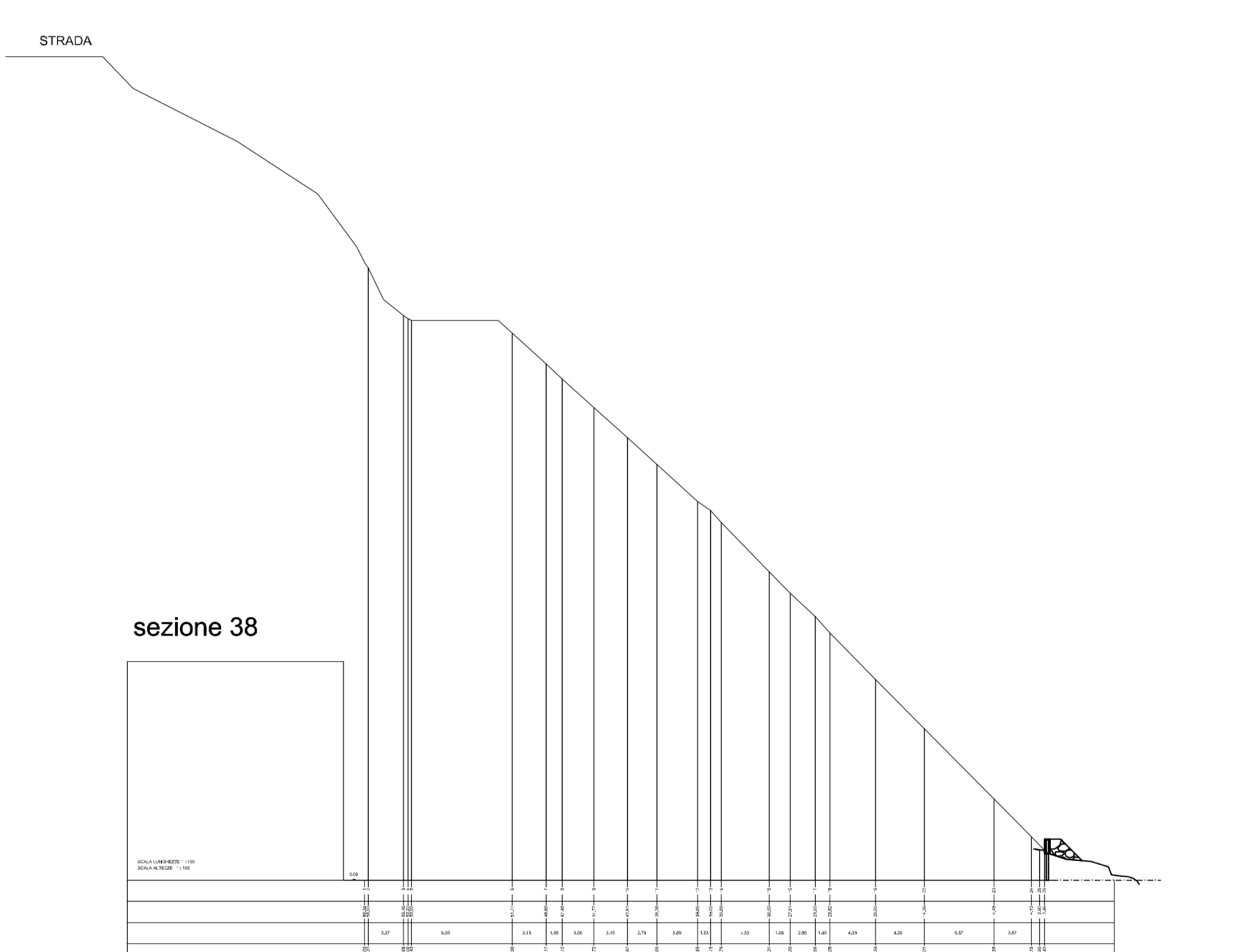
sezione 37



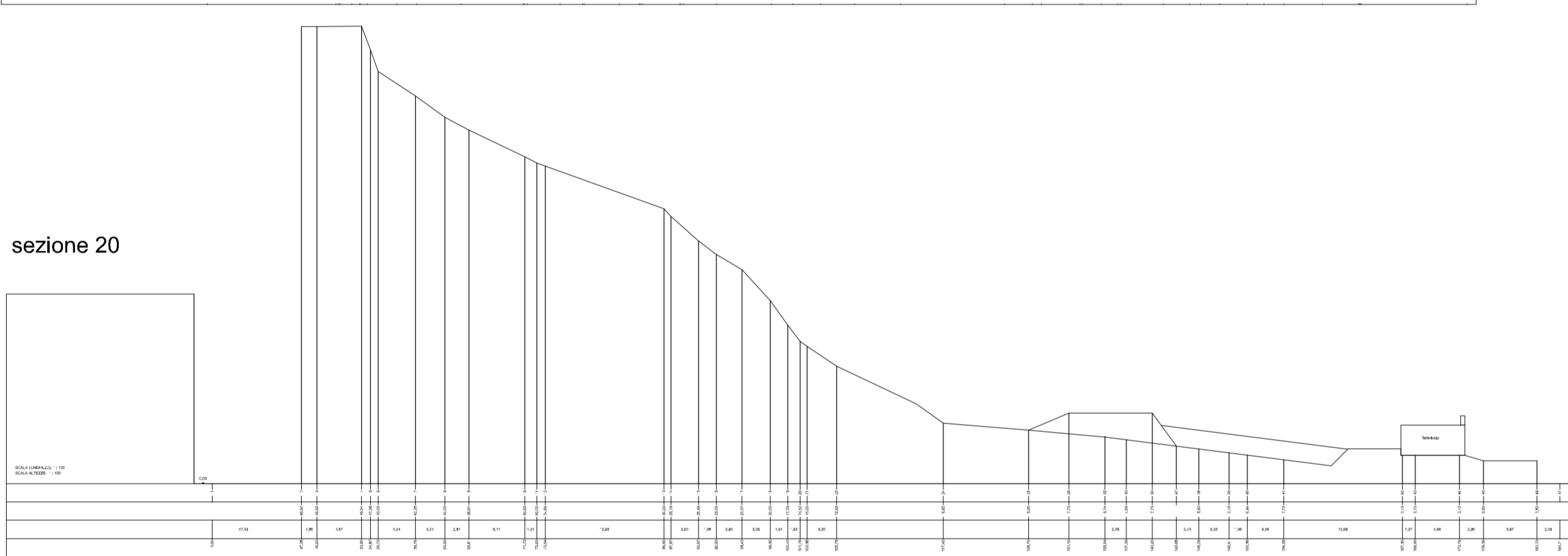
sezione 18



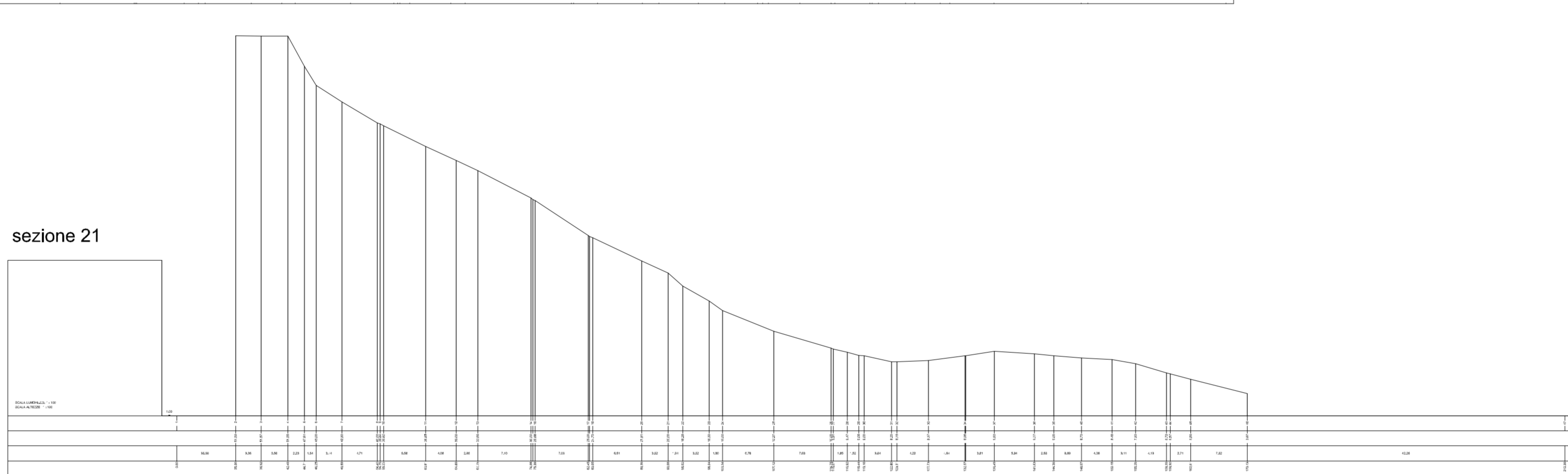
sezione 19



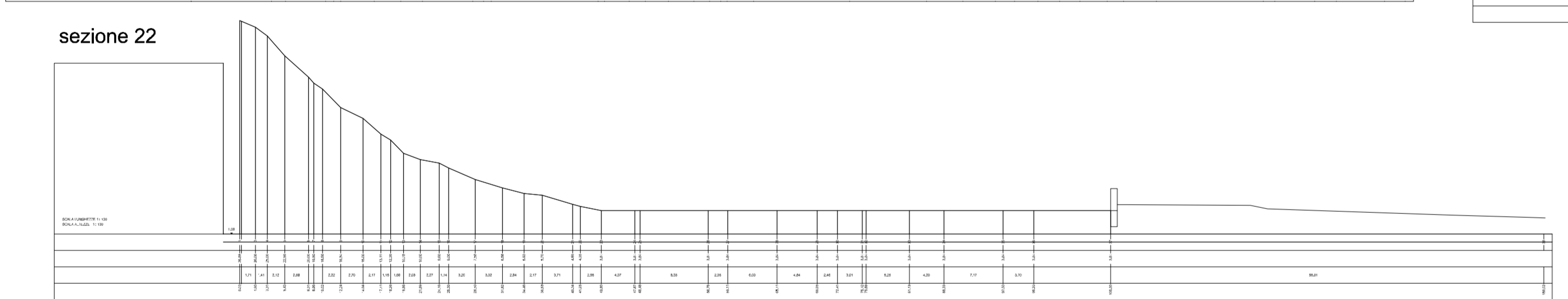
sezione 38



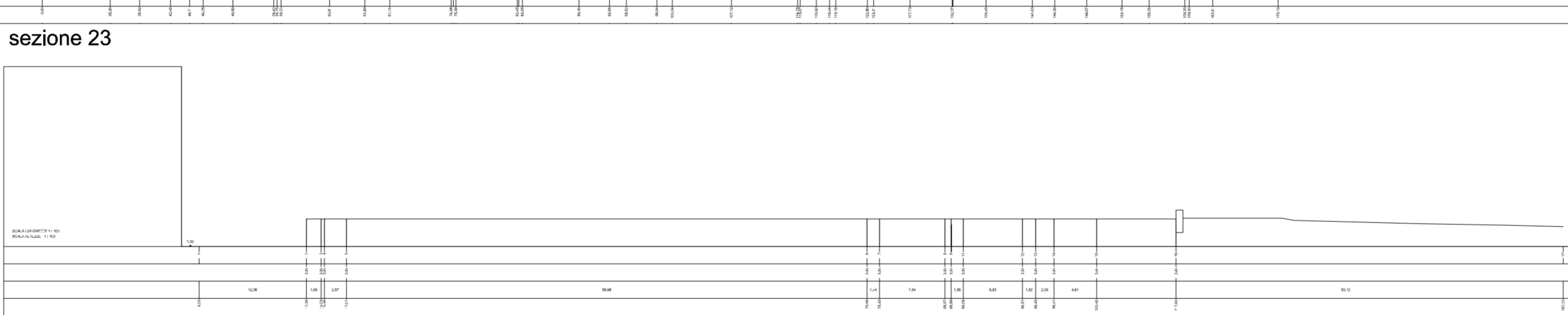
sezione 20



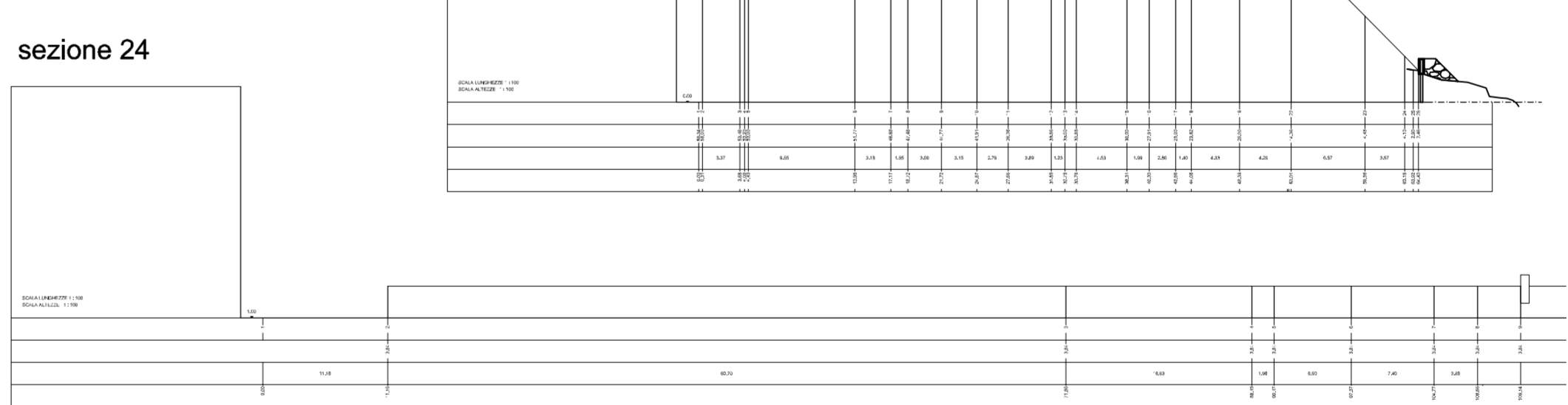
sezione 21



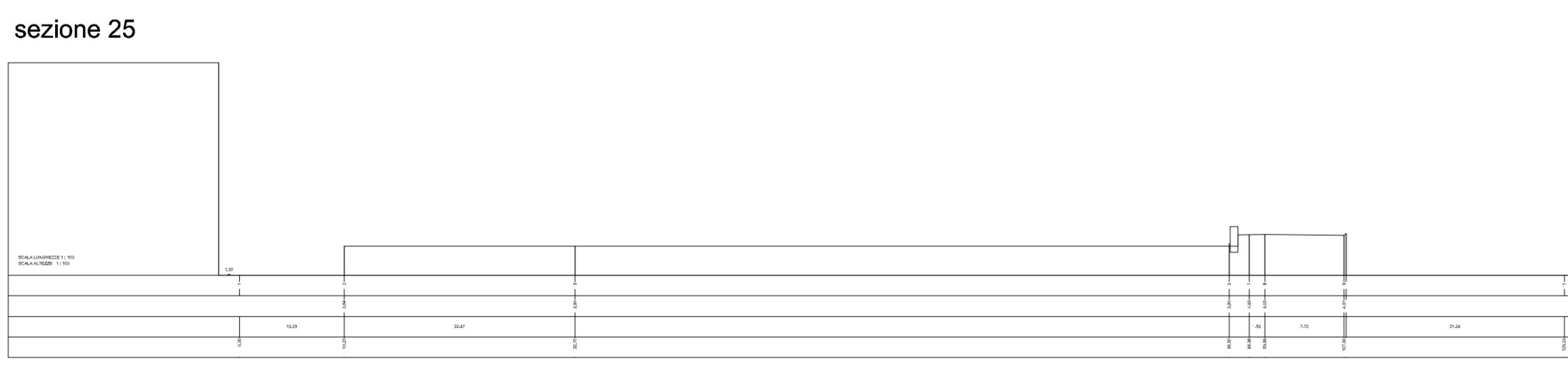
sezione 22



sezione 23



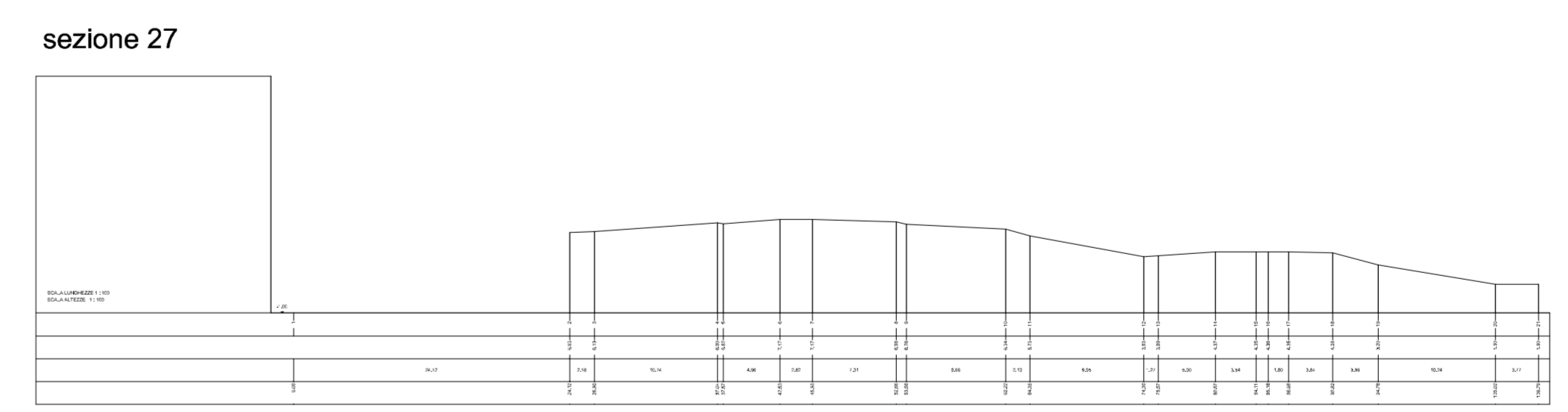
sezione 24



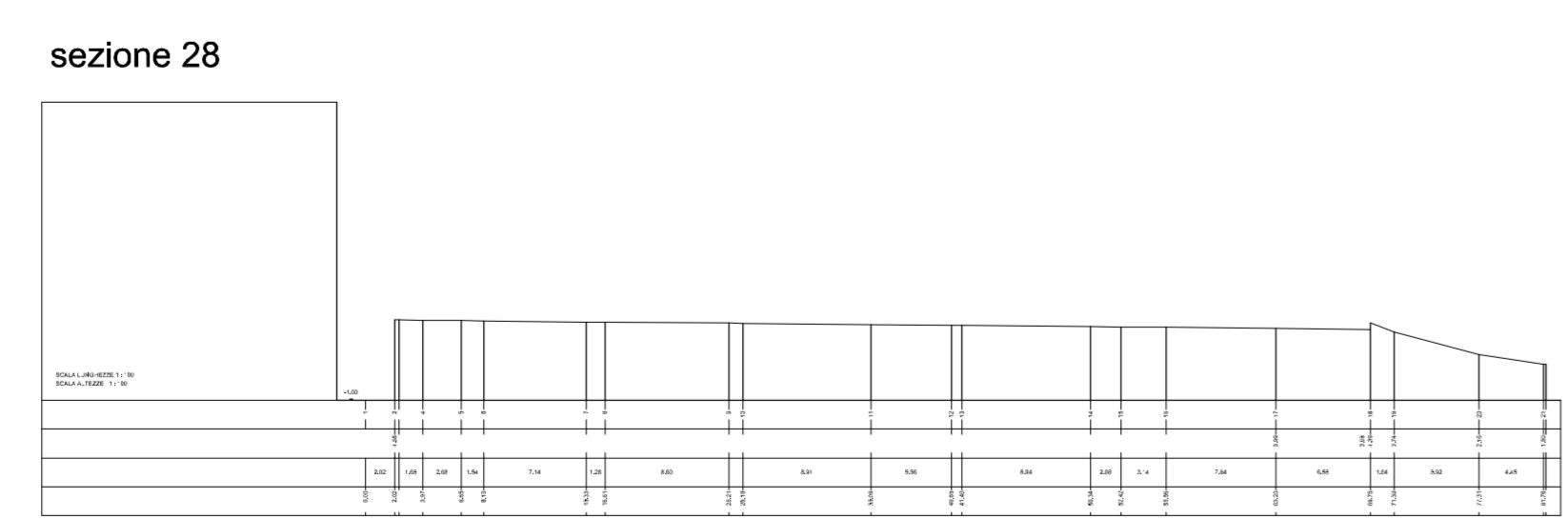
sezione 25



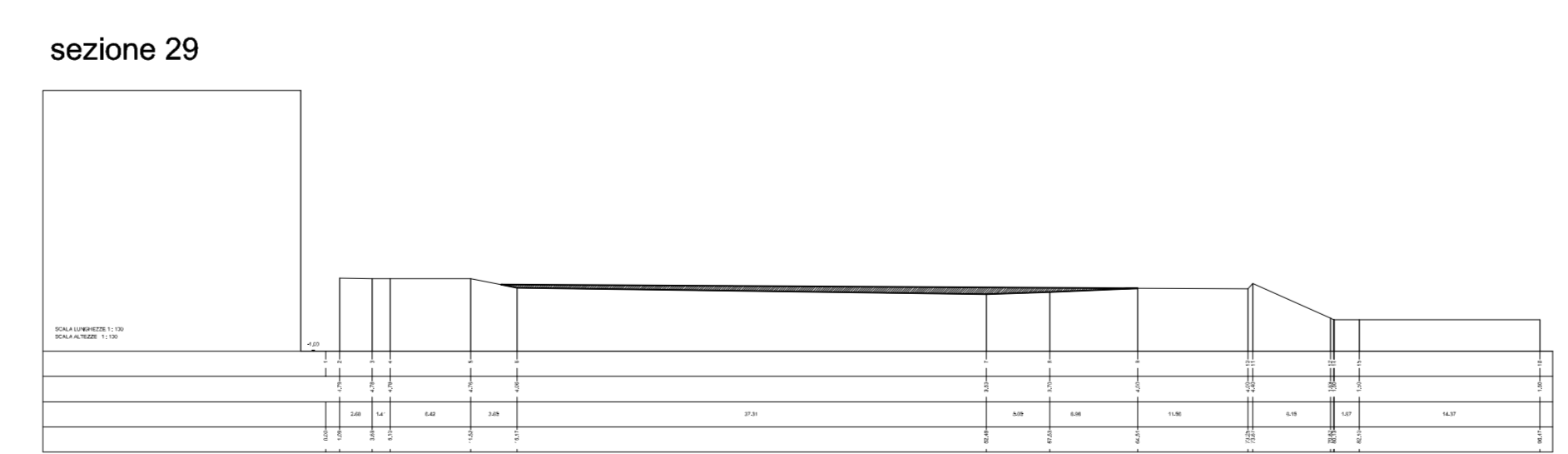
sezione 26



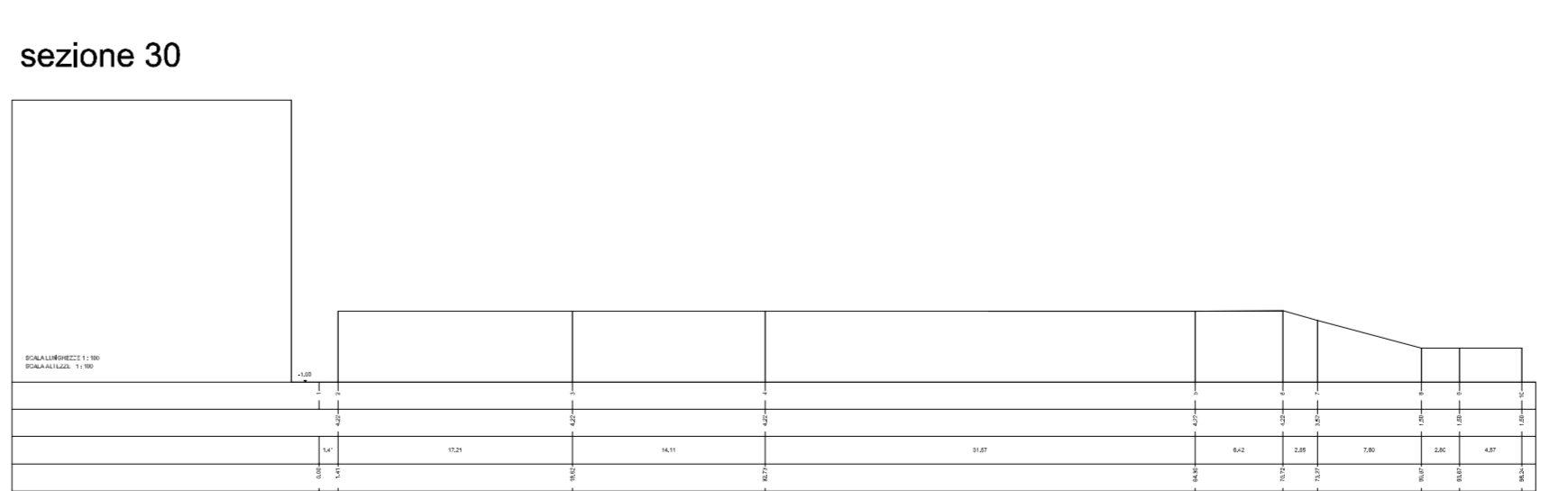
sezione 27



sezione 28



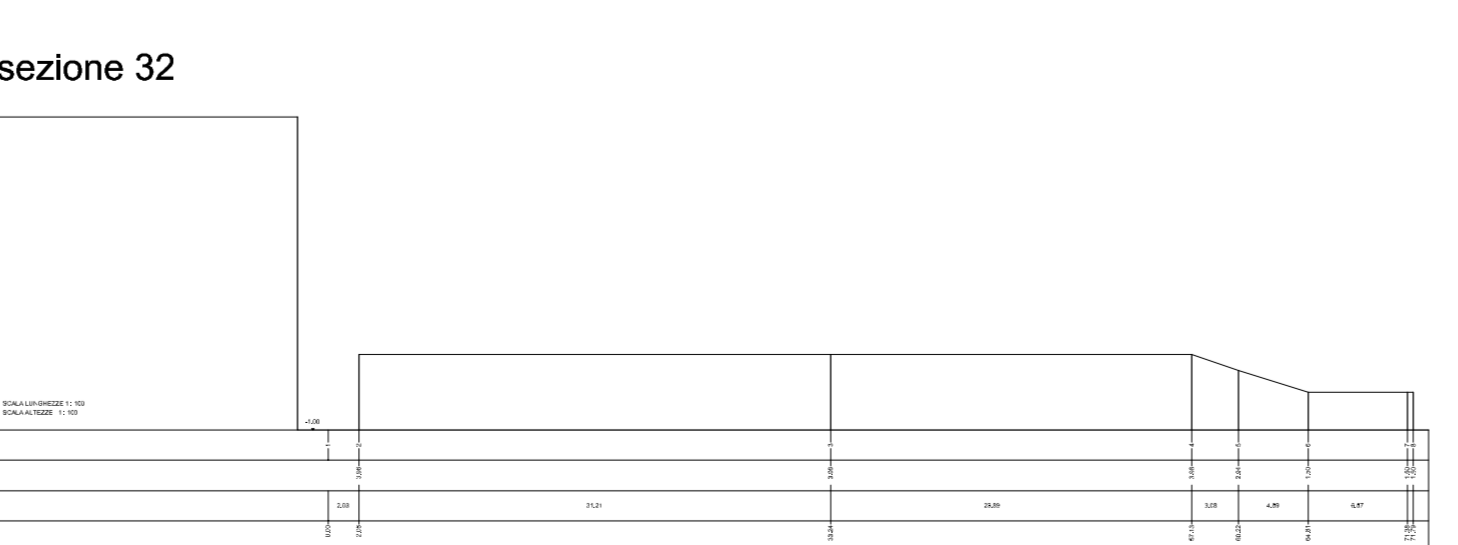
sezione 29



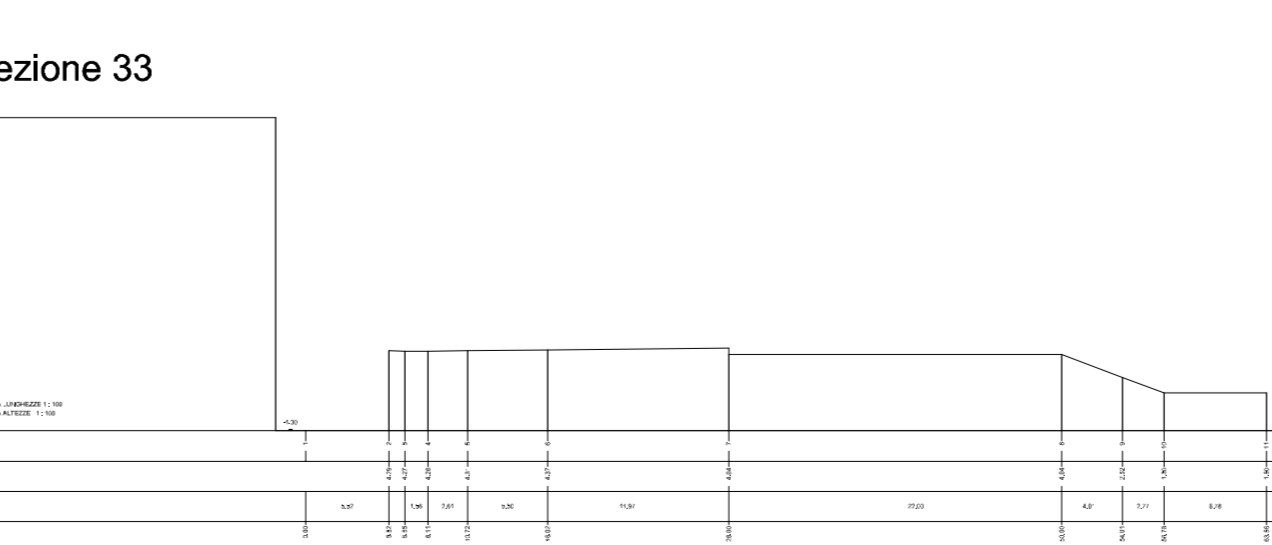
sezione 30



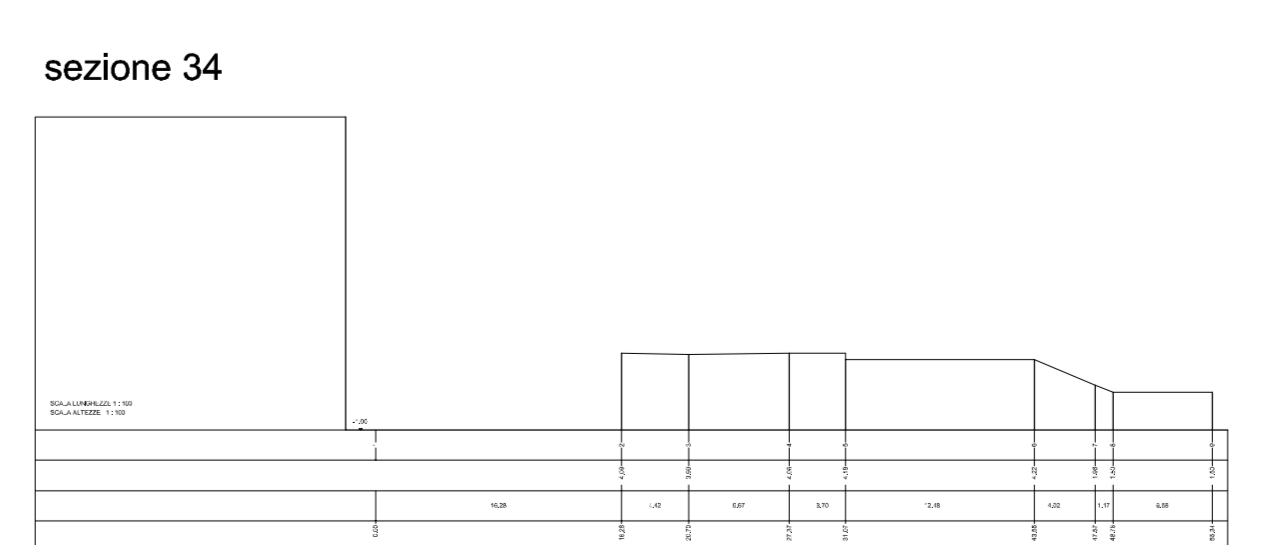
sezione 31



sezione 32



sezione 33



sezione 34

UNIONE DEI COMUNI METALLA E IL MARE



COMUNE DI BUGGERRU
Provincia di Carbonia - Iglesias

INTERVENTI DI MESSA IN SICUREZZA DELLE DISCARICHE
PRESENTI IN PROSSIMITA' DELLA SPIAGGIA DI BUGGERRU
E MESSA IN SICUREZZA PERMANENTE DELLE VECCHIE
DIGHE STERILI A RIDOSSO DELL'AREA PORTUALE

PROGETTO DEFINITIVO

ELABORATO SEZIONI PROGETTO SCAVO da 14 a 38
TAVOLA **9 rev 2**
SCALA 1:200
DATA MAGGIO 2019

PROGETTAZIONE
A.T.P. Dott. Geol. Franco Cherchi - Dott. Ing. Salvatore Angelo Figus